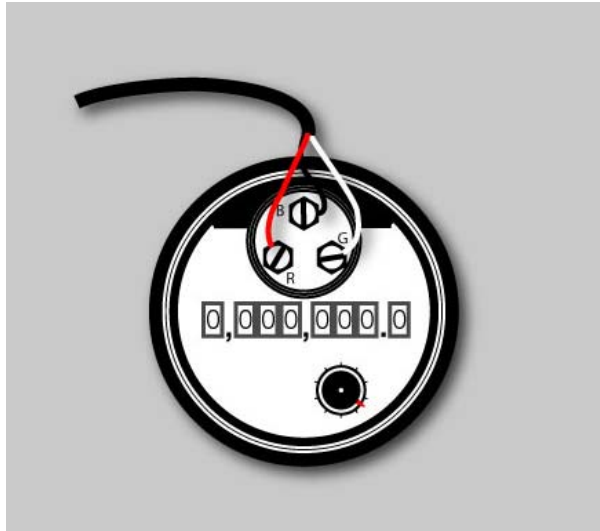




Purpose & Scope

This instruction provides wiring information for use in connecting a STAR MTU to **Sensus** and/or **Invensys** water meters (all sizes) equipped with **ECR** or **ICE** registers.

ECR or ICE



MTU Cable	Sensus/Invensys Register
Red	R (Red)
Black	B (Black)
White	G (Green)

Supplies and Tools Required

See **Publication 471-2000, General Installation and Wiring Guidelines** for a complete list of recommended tools and supplies for MTU Installation.

Application Notes

- The 8-digit Sensus ICE Register must be programmed to deliver 6 consecutive digits of reading information for proper operation with STAR MTUs.

Installation Procedure

Step 1 - Select a mounting location for the MTU that will allow optimum signal transmission, and install any needed wiring. Be sure to follow all General Installation and Wiring Guidelines as outlined in **Publication 471-2000**.

Step 2 – Select the wiring diagram that applies to the meter you are connecting and make the appropriate wiring connections.

- a. **Direct Wiring to Meter** - MTU wiring is supplied stripped to a standard length that fits water meters with screw terminals. Simply wrap the wires around the screw terminal and tighten the screw. It is recommended that the screws be tightened to no more than 4 – 5 in-lbs. Overtightening the screw can stress and possibly fracture the wire.
- b. **Water Meter with Integral Cable** - If the water meter is supplied with an integral cable and a cable-to-cable splice is necessary, use a gel-filled wire splice designed for outdoor (moisture applications) to seal the individual connections.

Note: When connecting a dual port MTU to a compound meter, connect port 1 (black jacket) to the primary, or high-flow register and port 2 (grey jacket) to the secondary or low-flow register.

MTU Instruction for Sensus and Invensys Water Meters

Step 3 – Make a final visual check of the wiring from the MTU to the meter register. Verify that the cable routing is neat, secure and professional.

Step 4 – Once installation and wiring are complete, program the MTU using the STAR Programmer Software and your MTU Programmer.